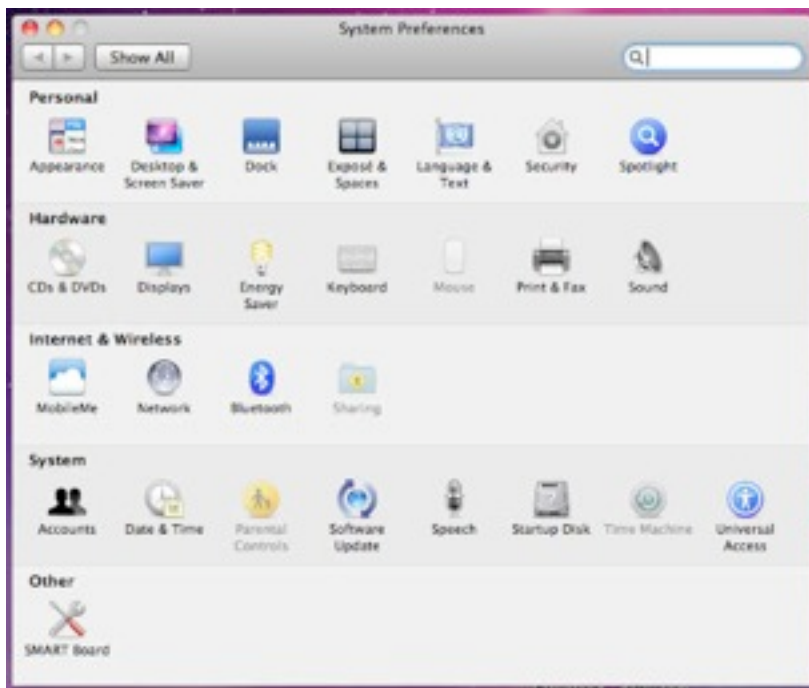


Mirroring and Extending Your Desktop

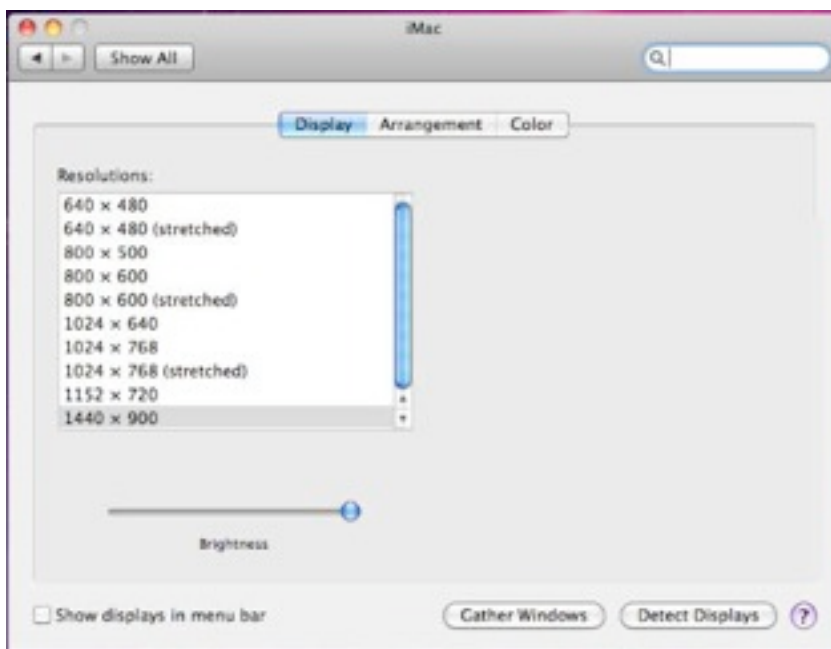
When you connect your computer up to a projector, you have two choices as to how your Mac will output to the projector: you can MIRROR your desktop, or EXTEND your desktop.

Mirroring means that whatever you see on your desktop is whatever is shown on the Projector. 80% of the time, this is what you will want. Here's how to enable that choice:

1. First, connect the projector to your computer with the correct VGA Adapter.

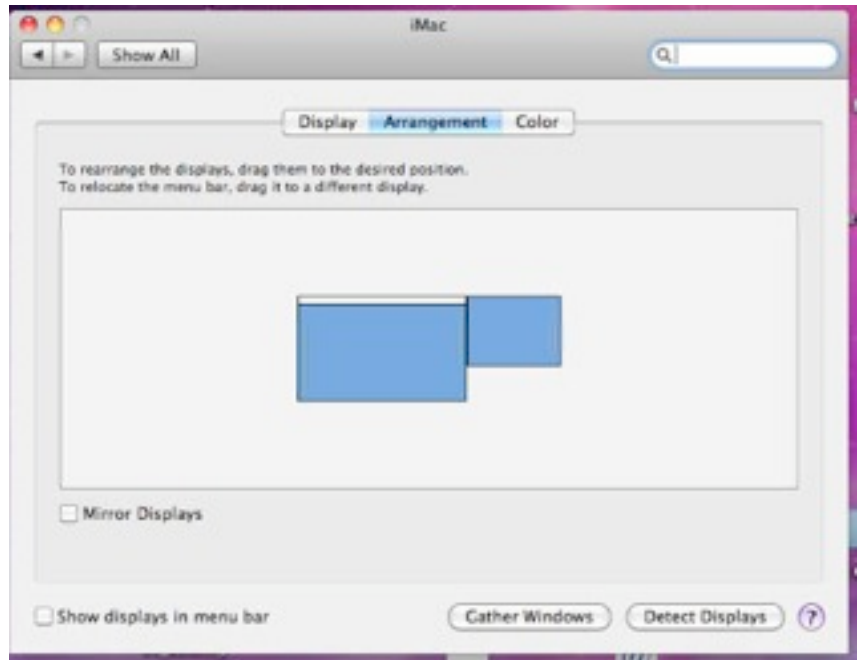


2. Click on the black Apple logo in the upper left corner of your screen and select **System Preferences**. You will see a screen that looks like the one to the Left.



3. Next, select the **Displays** icon (second row, second column) to open the Display Preferences. When you've opened the Display preferences, click on the **Arrangement** tab at the top of the window.

4. Finally, click on the **Mirror Displays** checkbox at the bottom of the window. This will mirror your desktop to your projector.



Extending your Desktop

Extending your desktop means that the projector will act as if it's a second monitor that's connected to your computer. You can easily drag windows from your computer screen to the projector by dragging them off the **Right Side** of the screen. Windows drag off the right side of the computer will be displayed on the projector.

To enable this feature, follow the steps for **Mirroring** your desktop, but in step 4 make sure the **Mirror Displays** checkbox is **Unchecked**.