

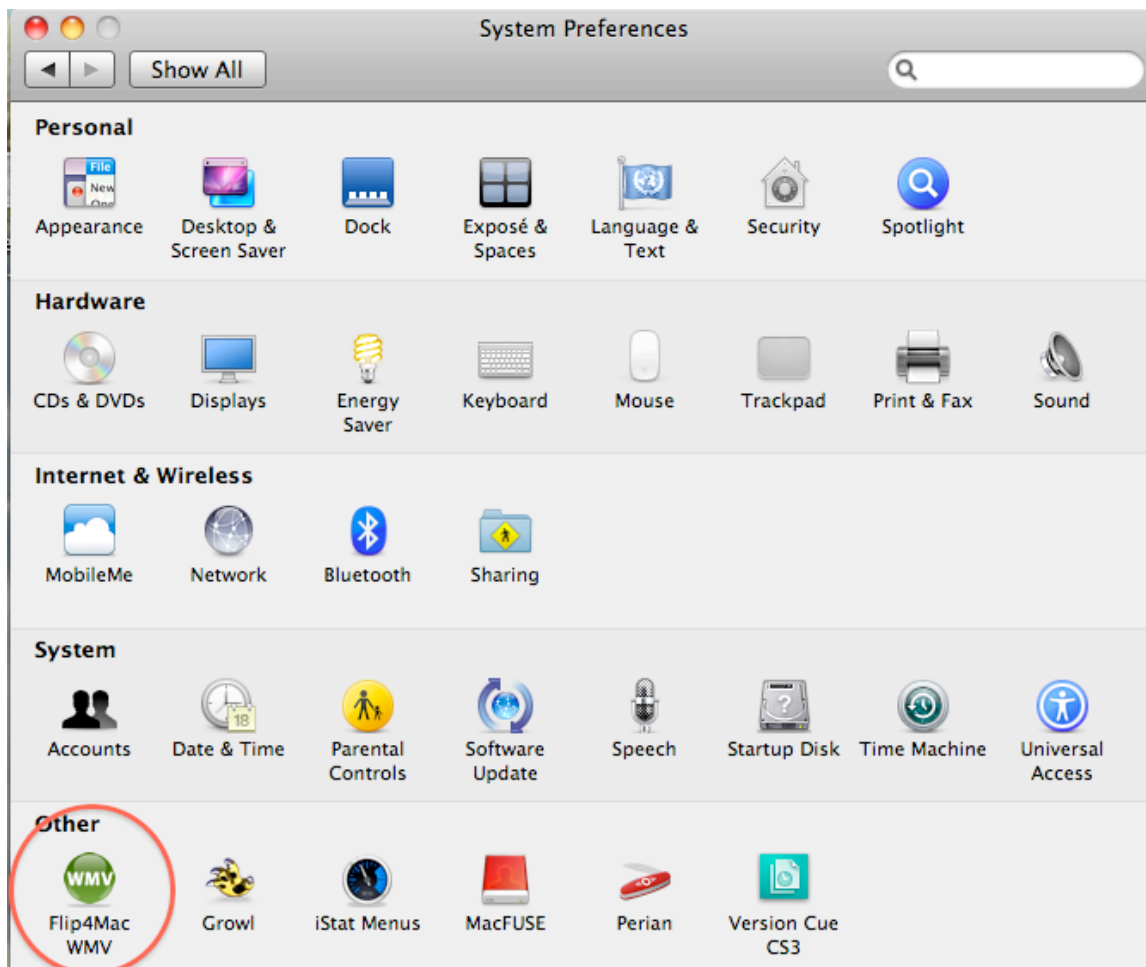
## Learn 360 – Tips and Tricks

It would seem that there are some videos that will work without issue from Learn 360 and then there are the ones that make you want to pull your hair when trying to view.

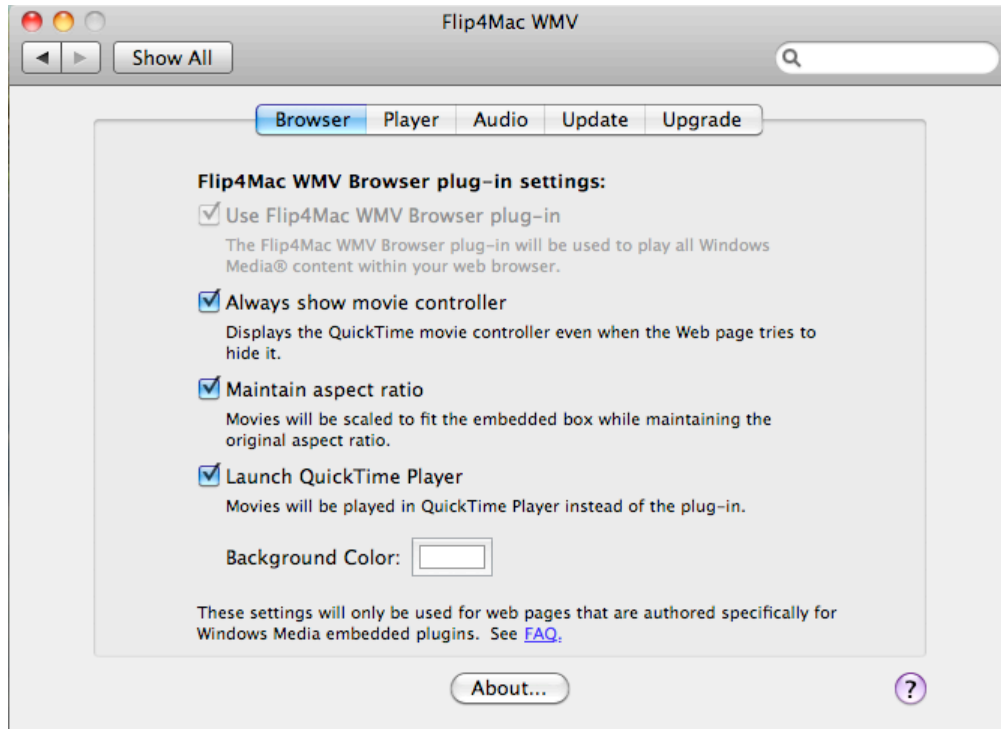
From talking to Learn 360 none of the Videos from A&E networks will allow downloading due to licensing agreements. These videos can only be streamed. Here is the problem, when you click “Launch Player”, Quicktime is launched but then says that the file cannot be viewed. Gary and I have tried to talk to Learn 360 about his issue with no success. We have however discovered a couple of work a rounds.

Each of your computers should have a program called Flip4Mac WMV. To access the setting for this program, open your system preferences. (Located under the Apple icon in the top left corner of your computer)

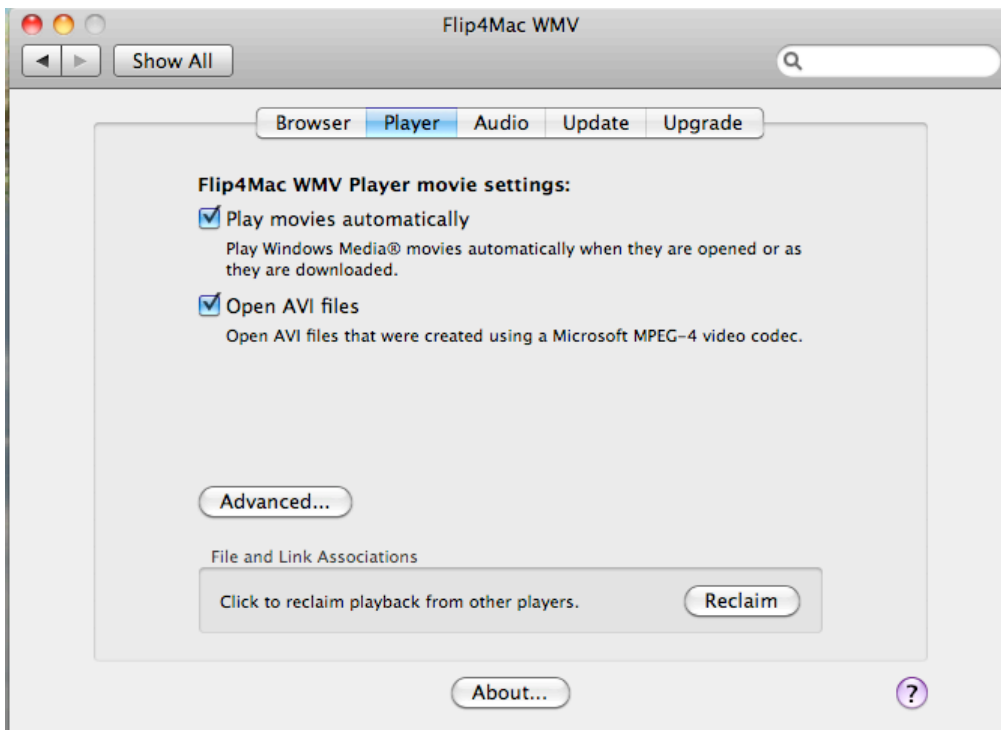
1. Click on the Flip4Mac WMV icon.



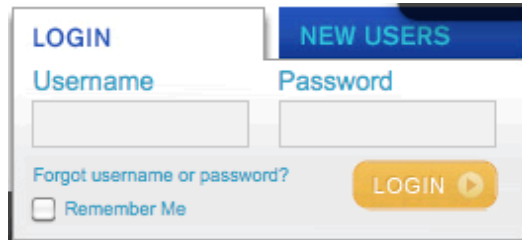
2. A window will open like below. Click on the tab marked "Browser" if it is not already highlighted. Down below, you will see check boxes. All of them need check marked.



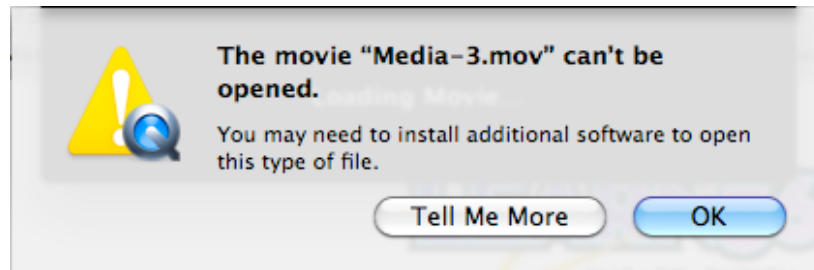
3. Next click on the "Player" tab. You want all of the boxes check marked here as well. Once you finished, just click the red "x" in the upper left corner.



4. Next you will need to login to your Learn 360 account. <http://www.learn360.com>



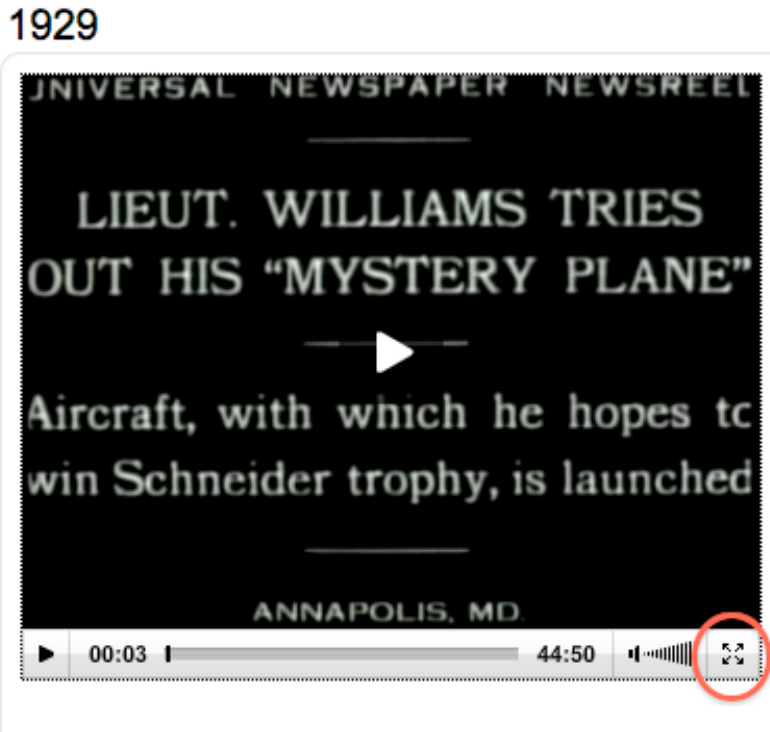
5. Once you have found a video that you want to play, if the video does not give the option to download the video, you are given the option to “Launch Player” which allows you to view the video in a bigger window. If Quicktime gives you the following error message, go back to your browser window.



6. You will notice that to the right of the video window, you can view the video in two other formats: either Flash or Windows. If you click of Flash, the video windows will reload and will now be a streaming flash video.

1929

7. You will notice in the lower right hand corner under the video that there is a set of arrows that point out from the center, if you click on this the video will show in full screen mode.



8. If playing the video in flash is not an option or doesn't play, you have a third and final option. You can click on the "Switch to Windows" button.

1929

LAUNCH PLAYER

FULL VIDEO

Add to Favorites  
Add to Playlist  
Add to Assignment

Formats:

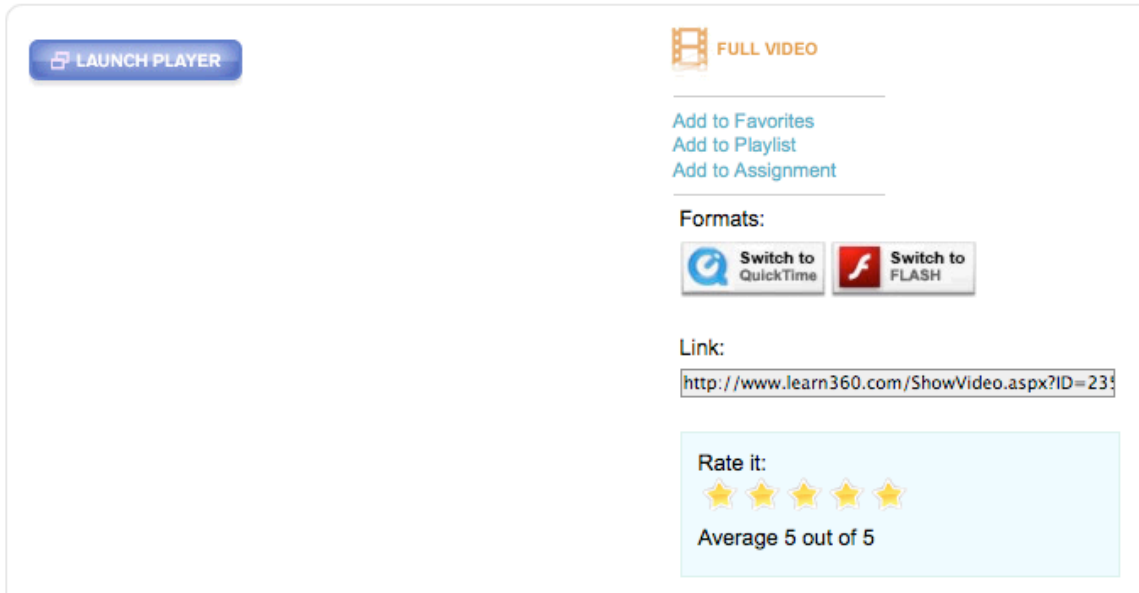
Switch to FLASH    Switch to Windows

Link:  
<http://www.learn360.com/ShowVideo.aspx?ID=233>

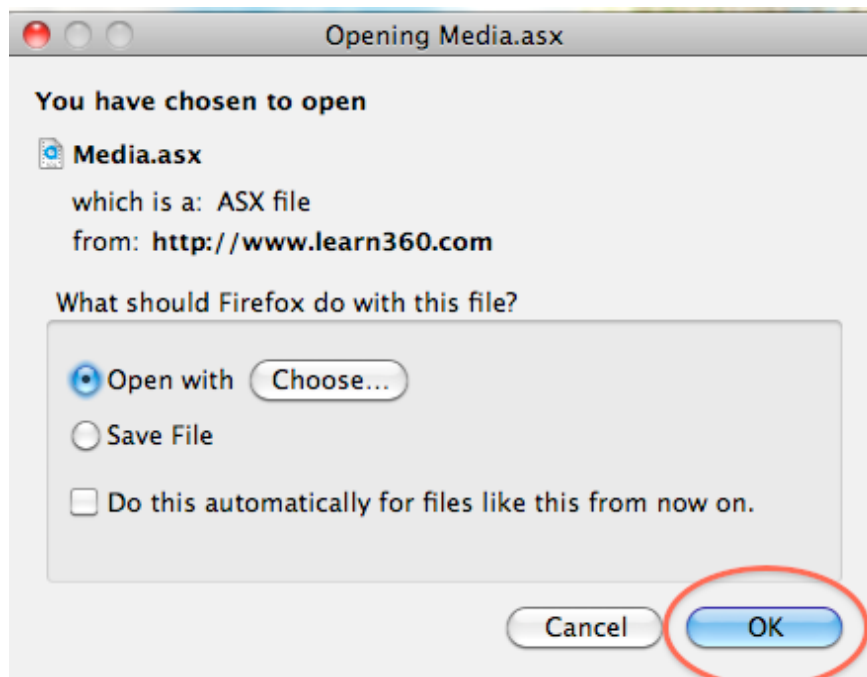
Rate it:  
Average 5 out of 5

9. After you click on the “Switch to Windows” button the video screen will reload. If it is blank as shown below, not a problem. Next you will need to click on the “Launch Player” button.

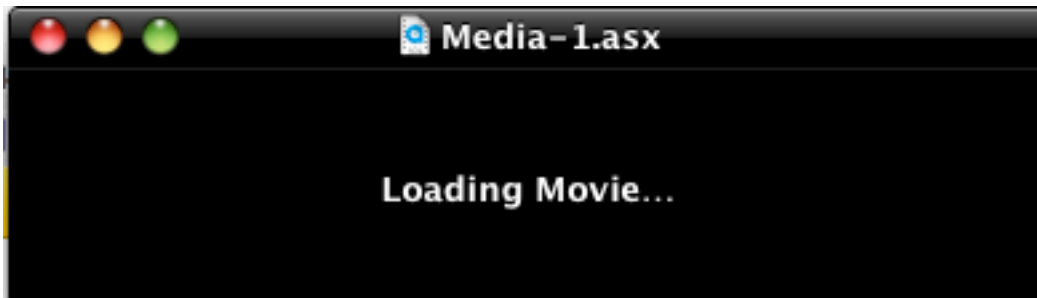
1929



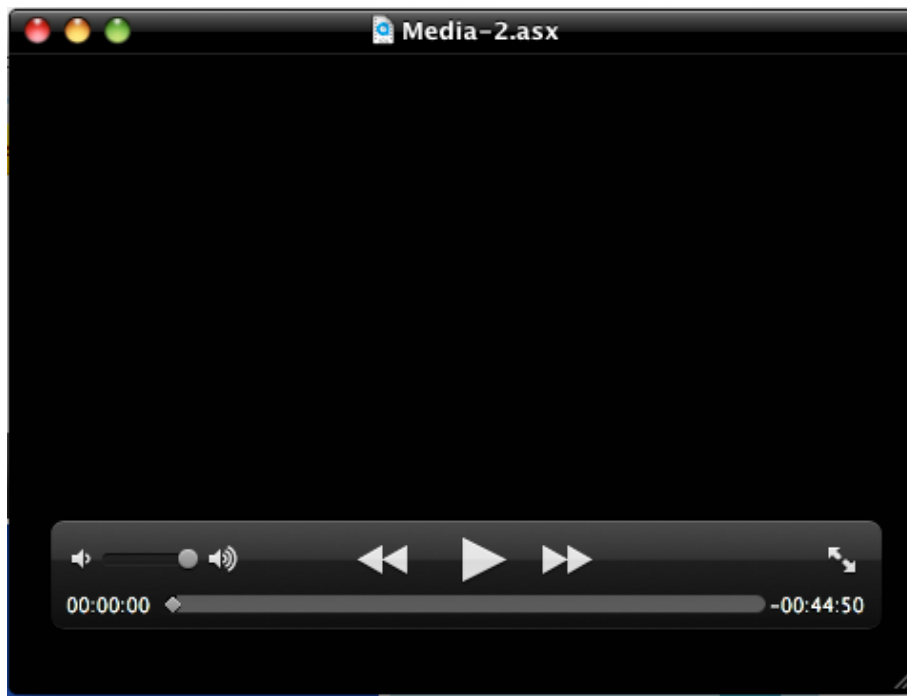
10. The following message will appear. All you need to do is click on the OK button.



11. Next you will see the following screen. The video is being loaded using Quicktime. Wait a few seconds as the video has to be loaded.



12. After a while you should then see a larger Quicktime. This means the movie has finished loading and that you can now play the video. Just click the play button. To view the video in full screen, click on the arrows in the lower right corner.



If you still experience problems, file a helpdesk. Be sure to explain what you have tried and any error messages your received.